

Deckenkassetten aus Streckgitter





Palestra Fitness
Progetto: Arch. Silvano Pagani - Bergamo
Maglia: **R16 x 8 x 2 x 1 mm**
Materiale: Ferro verniciato
Foto: Luca Cattaneo - Bergamo



← Copertina

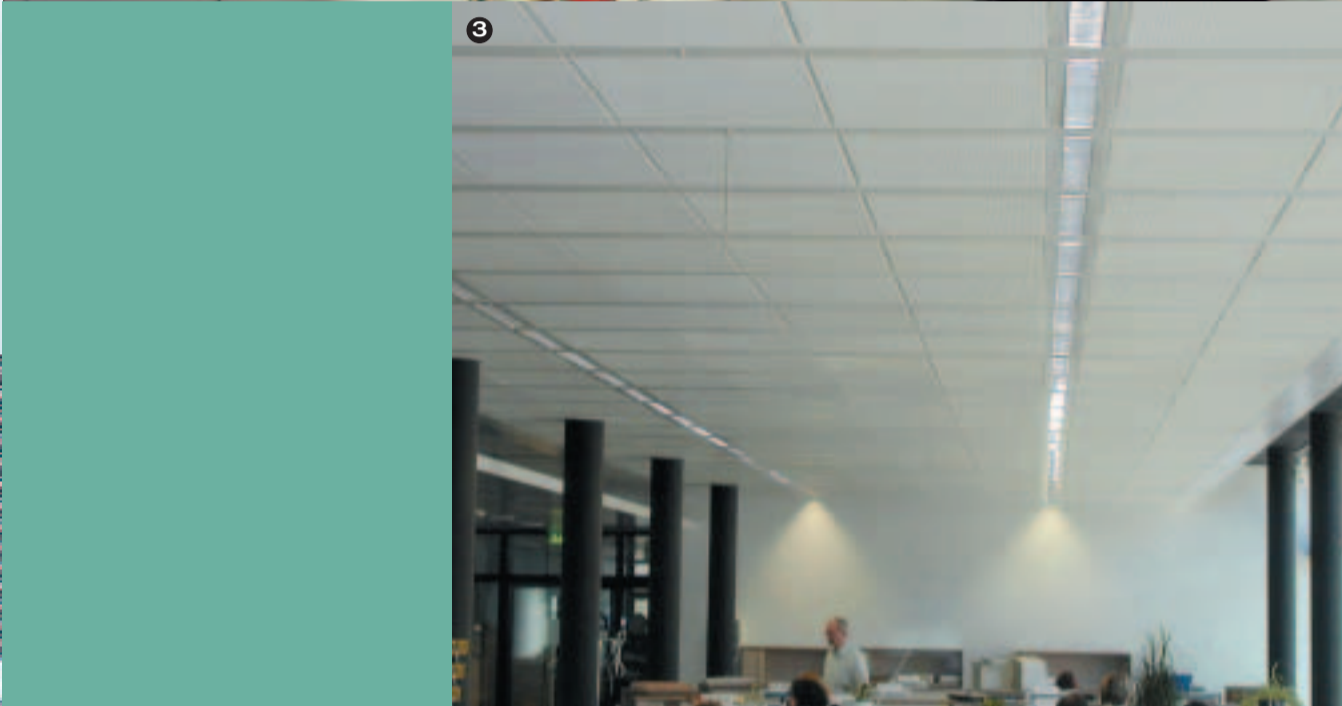
Centro Commerciale

Maglia: **Q8 x 6 x 2,1 x 1 mm**

Materiale: Ferro verniciato

Foto: Proff studio fotografico - Genova

Die vielseitigen Streckgitter-Kassetten ITALFIM eignen sich zur Ausführung abgehängter Decken, lärmabsorbierender Paneele, dekorativer Verkleidungen und anderer innenarchitektonischer Elemente.

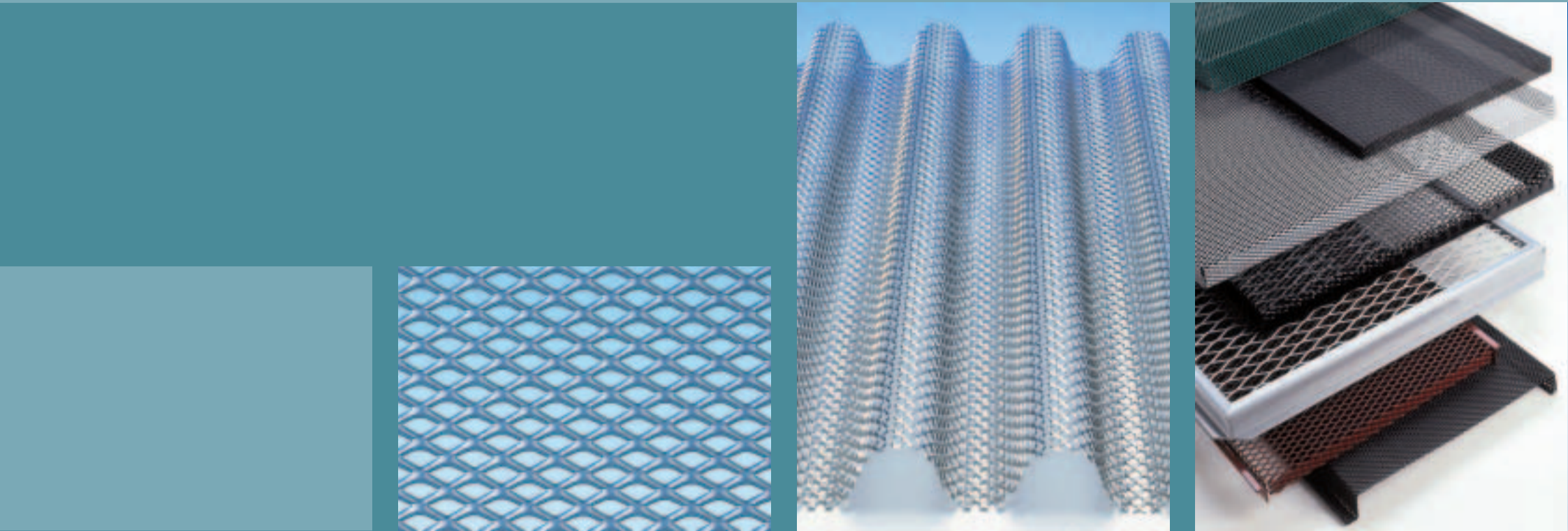


1/2 - Autosalone
Maglia: Q6 x 4,5 x 1,2 x 1 mm
Materiale: Ferro verniciato
Foto: Alfredo Cannatello - Bergamo



3/4/5 - UBS Dino-Center
Projekt: Arch. Atelier WW - Zürich
Masche: R28 x 10 x 2 x 1,5 mm
Werkstoff: Stahlblech pulverbeschichtet

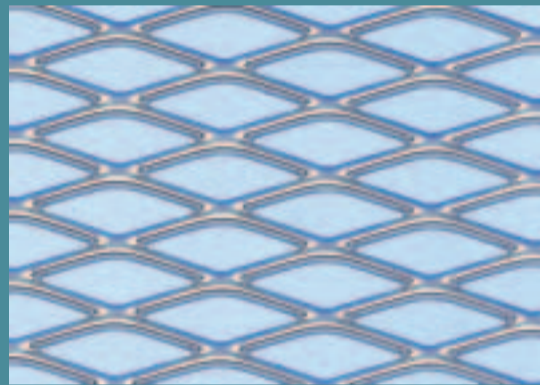
Diese Deckenkassetten aus Streckgitter geben Projektdesignern anpassungsfähige Vielzweck-Module in die Hand, variabel in Größe, Form, Dicke, Maschenbild,



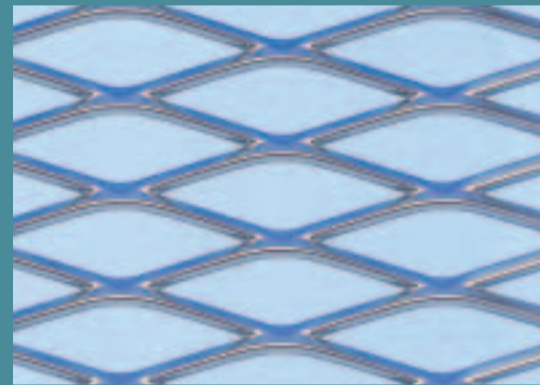
R10 x DC 5,8 av 1,5 sp 1



R16 x DC 8 av 2 sp 1



R28 x DC 10 av 2 sp 1,5



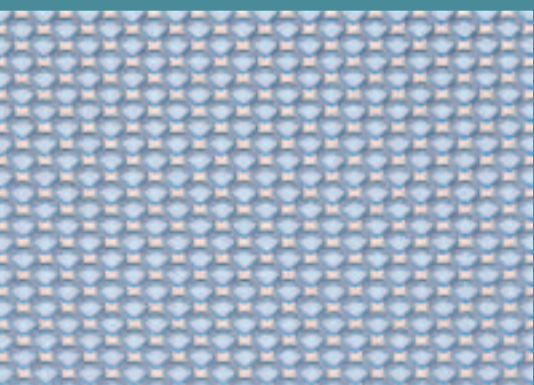
R43 x DC 13 av 2,5 sp 1,5



ST10 x DC 5,5 av 1,6 sp 1



T20 x DC 15,5 av 3,25 sp 1,5



Q6 x DC 4,5 av 1,2 sp 1



Q8 x DC 6 av 1,2 sp 1



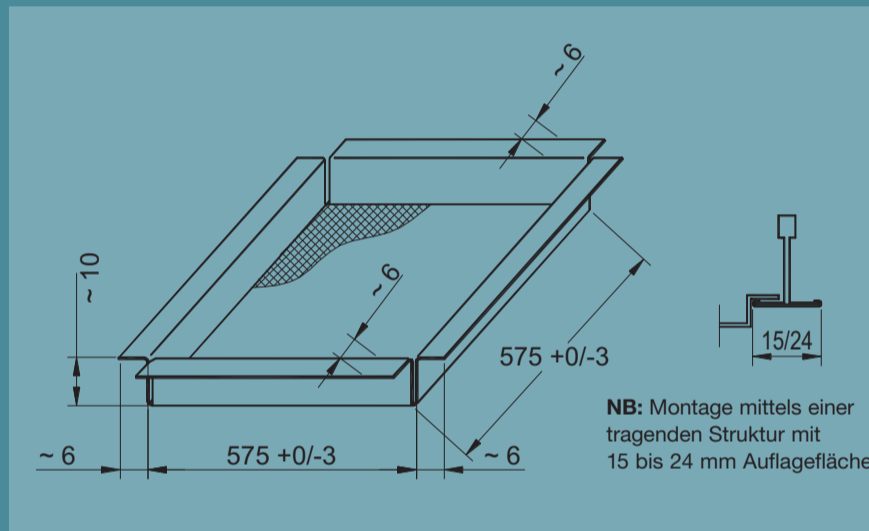
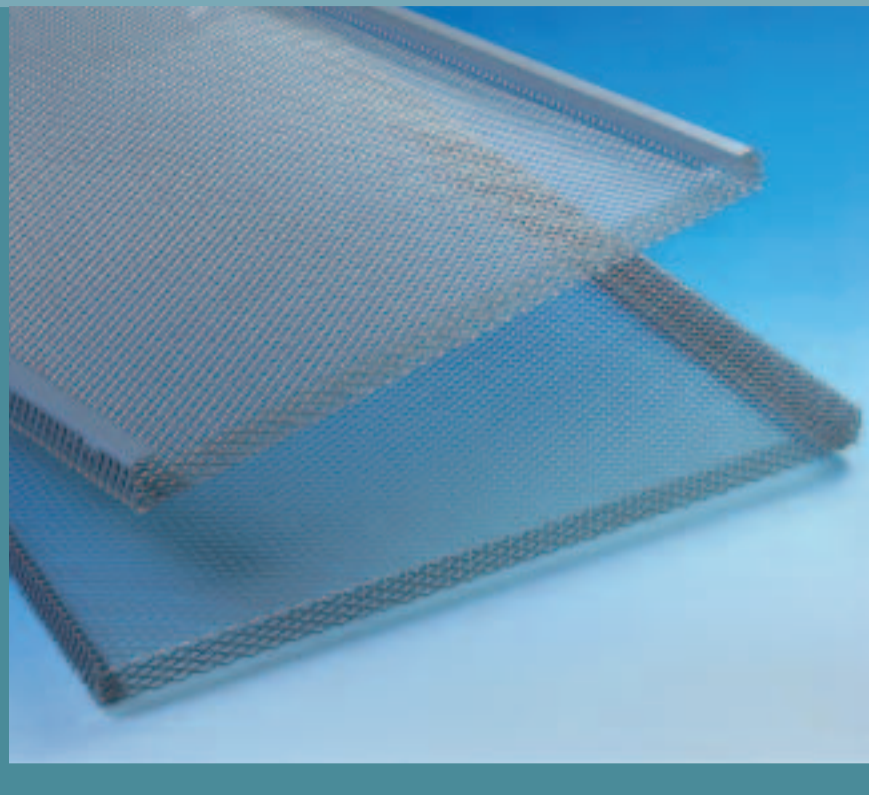
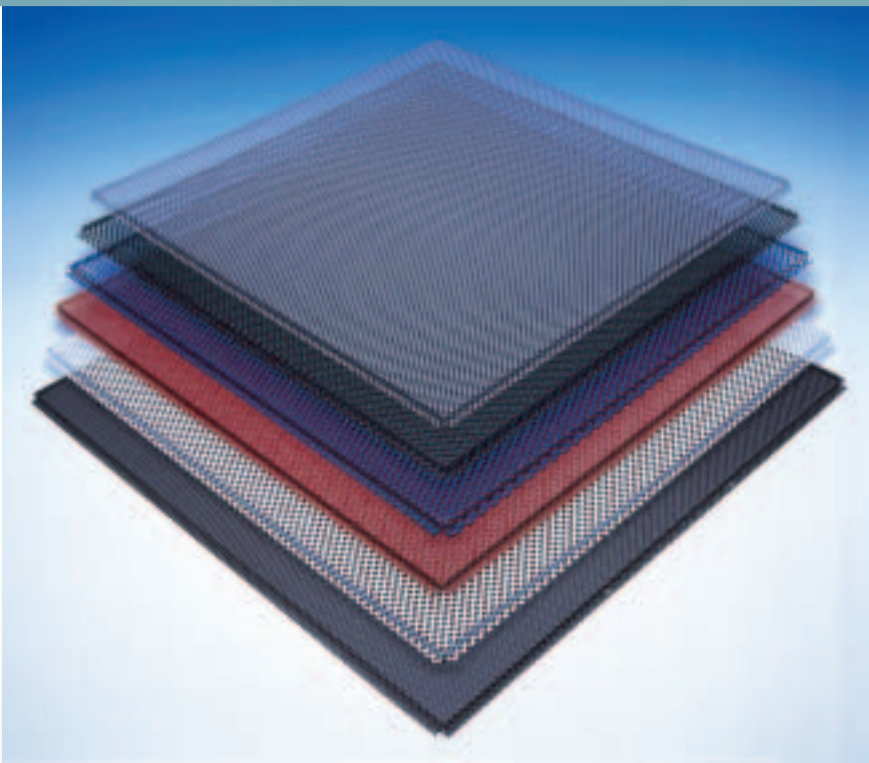
Q10 x DC 7 av 1,5 sp 1



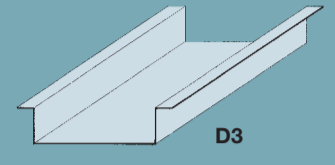
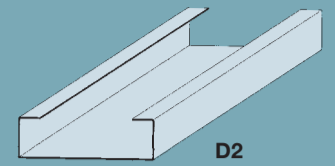
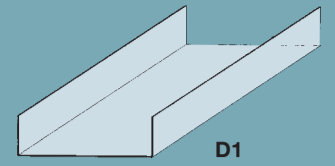
E15 x DC 7 av 0,8 sp 0,8



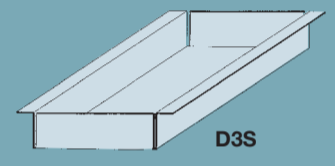
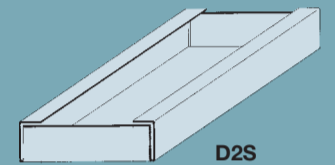
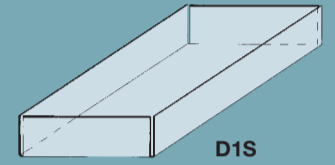
und Oberflächenbehandlung. Pulverbeschichtung gemäß RAL-Tabelle.



EINFACH

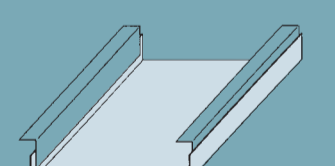
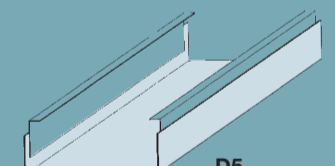
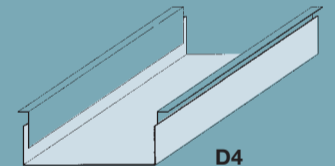


SCHACHTELFÖRMIG

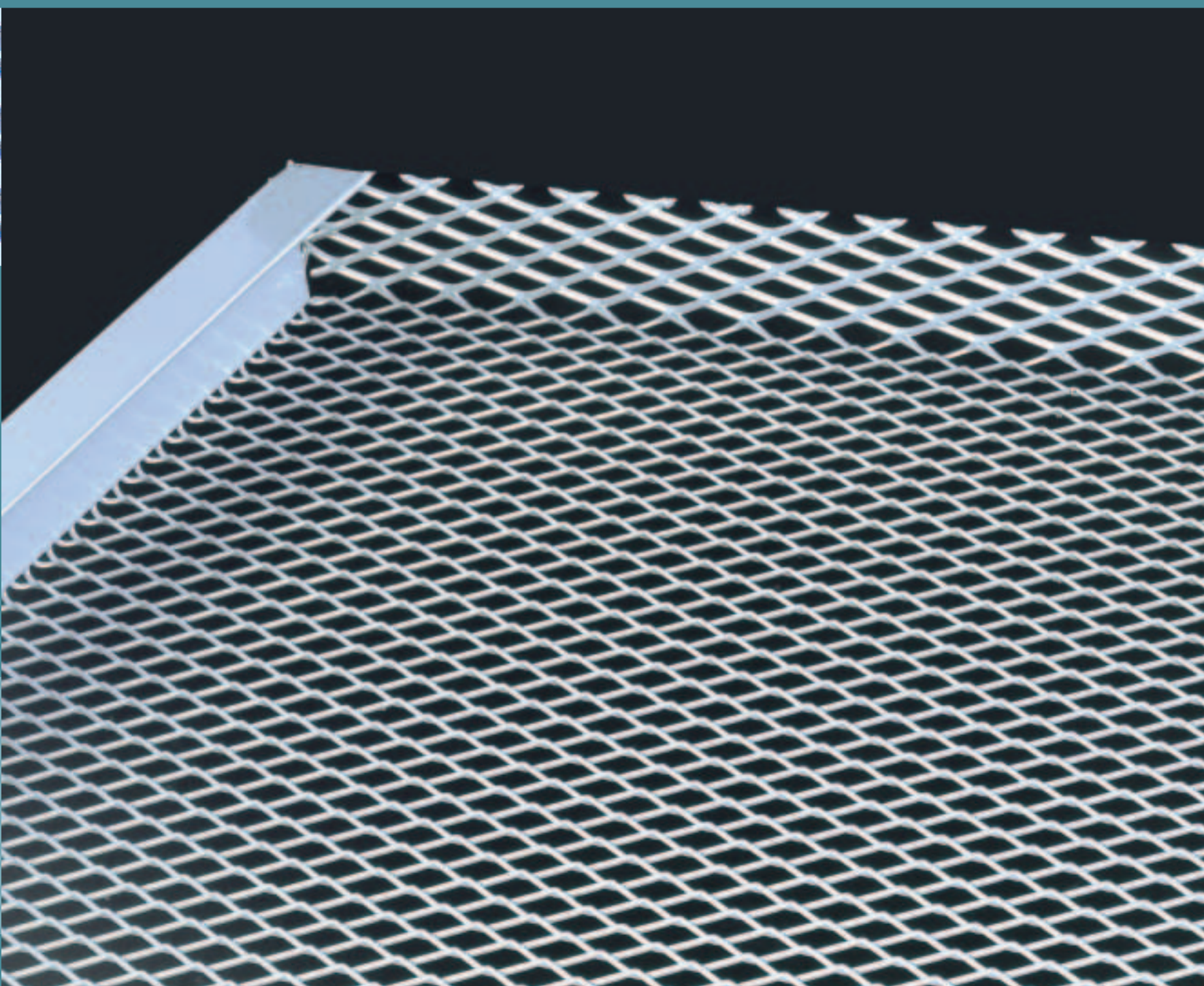
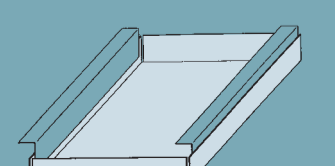
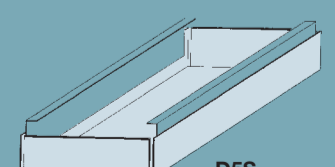
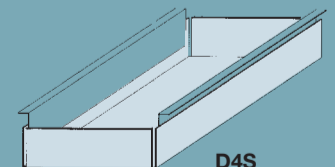


Deckenkassetten mit Versteifungsprofilen

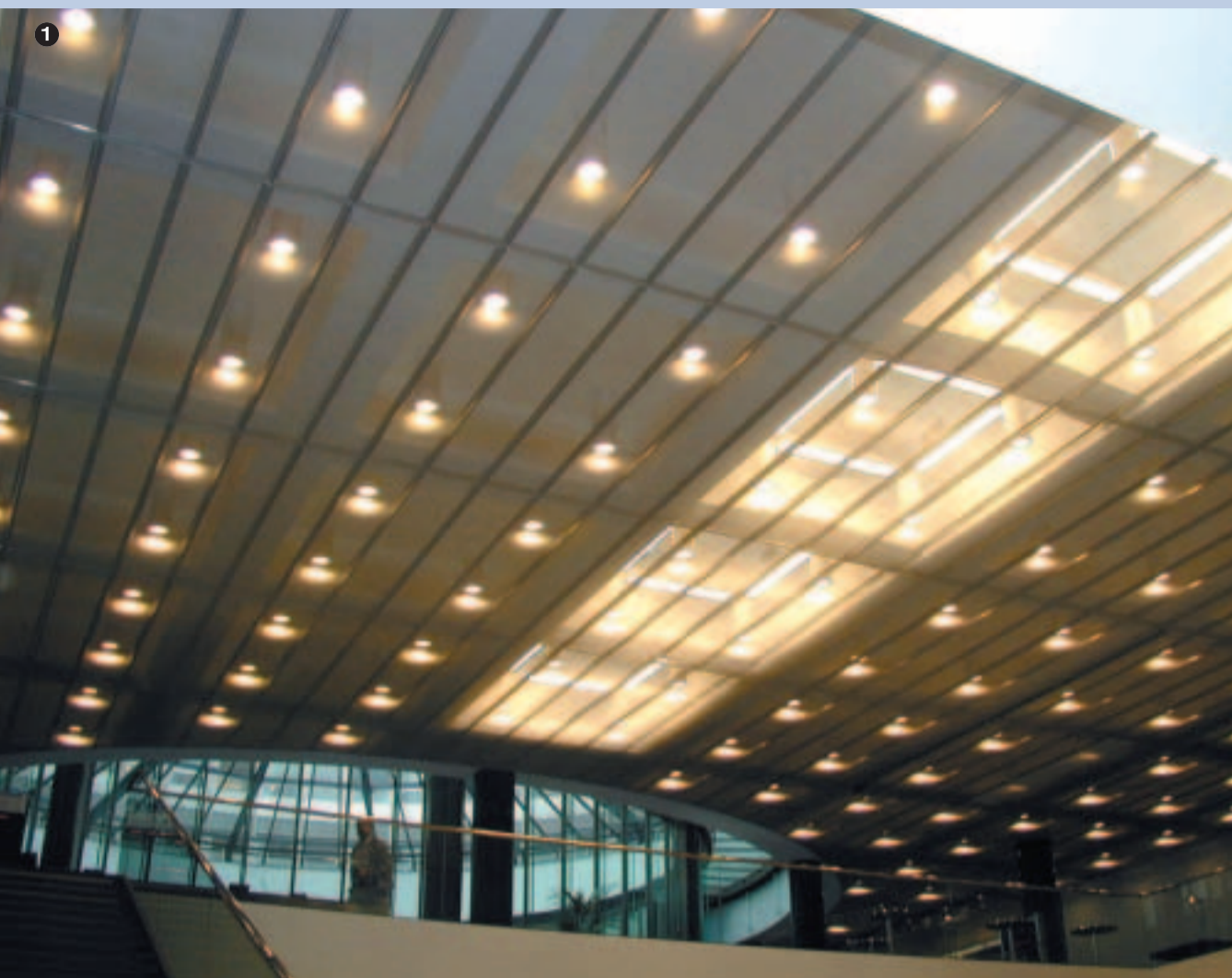
EINFACH



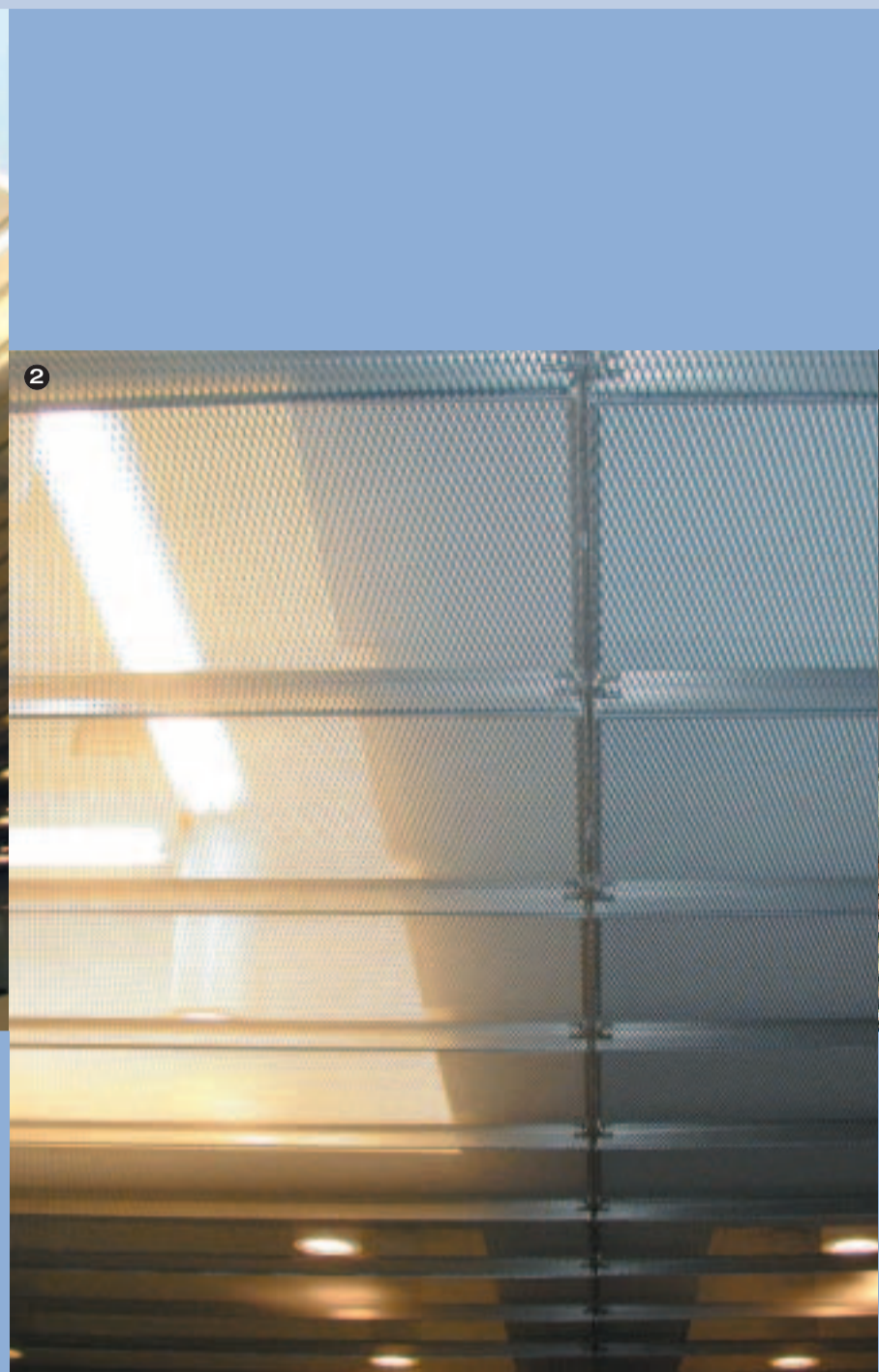
SCHACHTELFÖRMIG



Deckenkassetten aus Streckgitter schirmen Rohr - und Leitungsvernetzungen wirkungsvoll ab - sind außerdem luft- und lichtdurchlässig - und verschönern die Räumlichkeiten.



1/2 - SWX Swiss Exchange
Projekt: Arch. Weber Hofer - Zürich
Masche: R28 x 10 x 2 x 1,5 mm
Werkstoff: Aluminium pulverbeschichtet



3/4 - Einkaufszentrum
Masche: R28 x 10 x 2 x 1,5 mm
Werkstoff: Stahlblech pulverbeschichtet



Die Firma ITALFIM steht Projektdesignern jederzeit gern zur Seite, wenn es darum geht, Probleme bei Anwendung und Technik zu lösen.

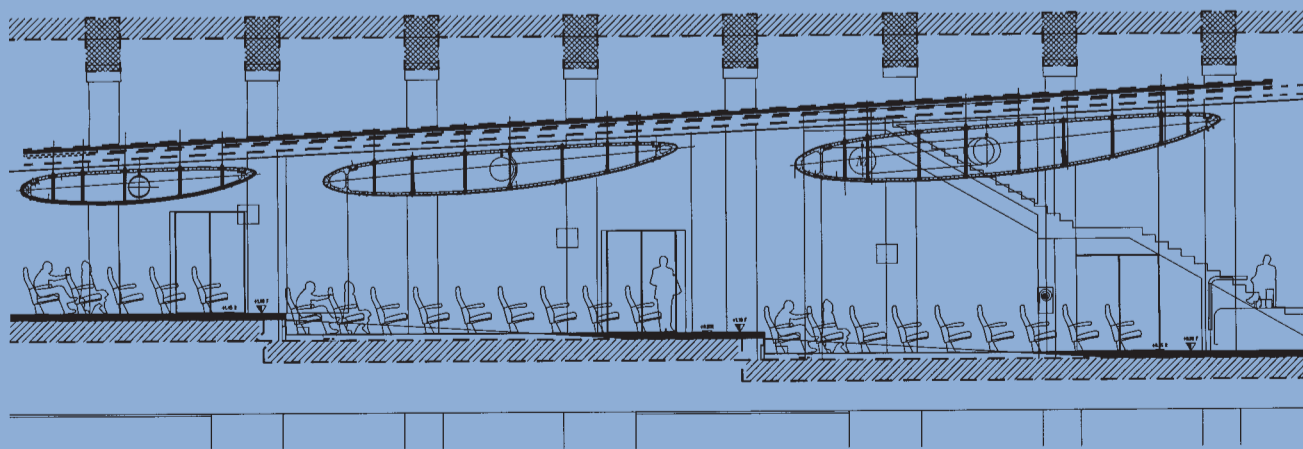


5

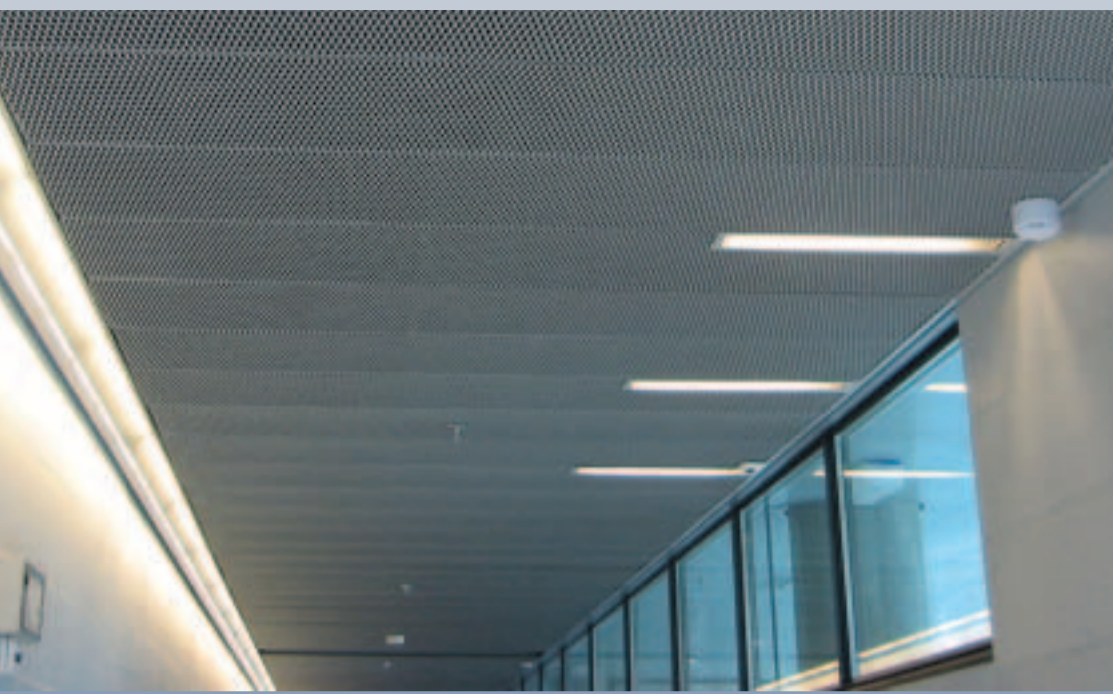


6

5/6 - Coop
Masche: R43 x 13 x 2,5 x 1,5 mm
Werkstoff: Stahlblech pulverbeschichtet



Sala Congressi
Progetto: Studio King & Roselli - Roma
Maglia: R45 x 8 x 3,5 x 1,5 mm
Materiale: Ferro verniciato
Realizzazione: Ingitec - Villa d'Almè - Bergamo



Comet Ag
Projet: Arch. Serge Charrière SA - Fribourg
Maille: R43 x 13 x 2,5 x 1,5 mm
Materiel: Fer verni



Centro Commerciale
Maglia:
Q8 x 6 x 1,2 x 1 mm
Materiale:
Ferro verniciato
Foto:
Proff Studio fotografico - Genova



Stará celnice
Projekt:
Arch. Ateliér 8000, s.r.o. - Praha 2
Typ oka: E3
Materiál: Hliník
Fotografie: Robert Spousta - Praha



Vitality Shoop
Masche: 85 x 40 x 14 x 1 mm
Werkstoff: Stahlblech pulverbeschichtet



Multisala
Progetto: Studio Sirio - Brescia
Materiale: Ferro verniciato
Maglia: Q10 x 7 x 1,5 x 1 mm
Foto: Luca Capecci